

PHB-200

Managed SFP Patching Hub 20-port 100/1000-T(X) to 20-port 100/1000-X SFP



PHB-200 is a 20-channel SFP patching hub that converts Ethernet copper 100/1000Mbps to SFPs working at 100Mbps and 1000Mbps. PHB-200 can connect to any RJ-45 Ethernet switch and supports any third-party standard SFP module from any SFP vendor. PHB-200 can also be used as an Ethernet copper-to-fiber media converter. With different kinds of fiber optic media, both multi-mode and single mode fiber are available as well as BiDi which allows bi-directional transmissions using only a single fiber to extend the distance of Fast Ethernet and Gigabit Ethernet networks. With SNMP and Web-based management, the network administrator can monitor, configure and control the activity of PHB-200 remotely.

Features

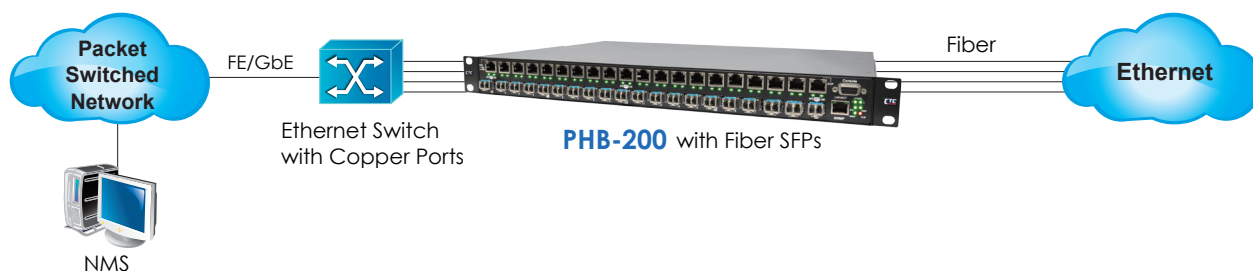
- ◆ 1U" Height 19" 20 channels SFP patching hub
- ◆ 20-port 100/1000Base-T(X) to 20-port 100/1000Base-X SFP
- ◆ Auto MDI/MDIX in TP port
- ◆ Auto-Negotiation in TX port
- ◆ Supports hot-swappable SFPs working at 100 Mbps and 1000 Mbps
- ◆ Supports Web, Telnet, SNMP Management (PHB-200M)
- ◆ Local configuration via DB9 port
- ◆ Supports Link Pass-Through
- ◆ Supports Link loss Alarm
- ◆ Supports any third-party standard SFP module
- ◆ Supports SFP DDMI
- ◆ Layer 1 wire-speed conversion with fully transparent function
- ◆ Available in 3 types : power built-in AC, DC, AC+DC

Specifications

Optical Interface	Connector	SFP LC
	Number of port	20
	Data rate	100/1000Mbps
	Duplex mode	Full duplex
	Fiber	MM 50/125um, 6.25/125um, SM 9/125um
	Distance	MM 2km, SM 15/30/50/80/120km, WDM 20/40/60/80km
Electrical Interface	Wavelength	1310nm, 1550nm, CWDM 1471nm ~ 1611nm
	Connector	RJ45
	Number of port	20
	Data rate	10/100/1000Mbps
	Duplex mode	Half / Full duplex
	Cable	10Base-T Cat. 3, 4, 5 UTP 100/1000Base-T(X) Cat.5, 5e or higher

Management	Console, Web, Telnet, SNMP
Control Port	RS-232 DCE, DB-9, female
Standards	IEEE 802.3, 802.3u, 802.3ab, 802.3z, 802.3x
Indications	Power FX-Link, Duplex, TX-Link/Act, TX-Speed
Power	100 ~ 240VAC, 18 ~ 72 VDC
Power Consumption	AC: 105 VA DC: 70 W
Dimensions	180 x 440 x 44mm (D x W x H)
Weight	3kg
Temperature	0 ~ 60°C (Operating), -10 ~ 70°C (Storage)
Certification	CE, FCC, LVD, RoHS

Application



Ordering Information

Model Name	Description
PHB-200-AC	20-port 100/1000-T(X) to 20-port 100/1000-X SFP, built-in AC power
PHB-200-DC	20-port 100/1000-T(X) to 20-port 100/1000-X SFP, built-in DC power
PHB-200-AD	20-port 100/1000-T(X) to 20-port 100/1000-X SFP, built-in AC+DC power
PHB-200M-AC	Managed 20-port 100/1000-T(X) to 20-port 100/1000-X SFP, built-in AC power
PHB-200M-DC	Managed 20-port 100/1000-T(X) to 20-port 100/1000-X SFP, built-in DC power
PHB-200M-AD	Managed 20-port 100/1000-T(X) to 20-port 100/1000-X SFP, built-in AC+DC power

Power Type
PHB - 200 -
 Example: PHB - 200M - AC