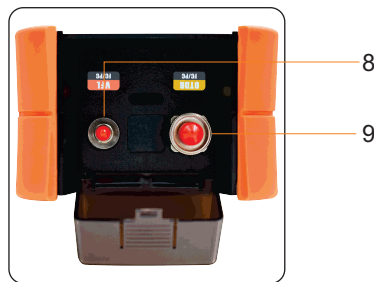
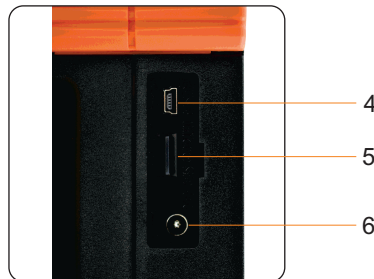
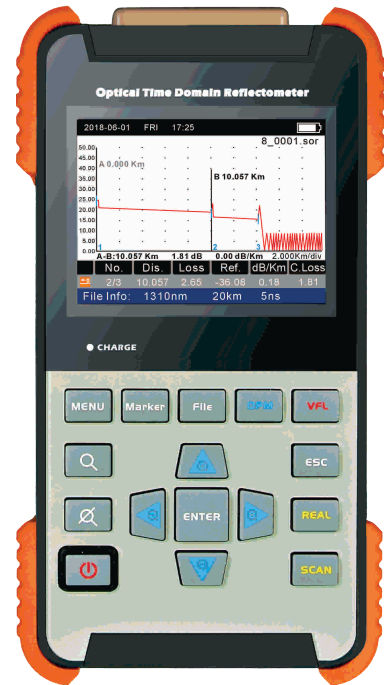


OTDR-3501

Palm OTDR with built-in VFL

- ◆ Built-in VFL
- ◆ High contrast color TFT LCD
- ◆ Automatic one-button testing
- ◆ Easy to operate for beginners and experts
- ◆ Integrated PALM design, small, light, easy to carry
- ◆ Input laser signal auto detection and self-protection
- ◆ User-friendly OTDR simulation software shows details of events



- 1 Anti-dust cover
- 2 LCD
- 3 Power button
- 4 USB interface
- 5 TF(micro SD) card slot
- 6 DC Socket
- 7 Battery cover
- 8 VFL
- 9 OTDR



NEXT-Generation Network Measurement



ISO9001



ISO14001:2015

SPECIFICATIONS

Dead Zone	Event:1.5m/Attenuation:5.0m(4m/9m@850nm)
Pulse Width	S/A:5ns-10us, B/C:5ns-20us, MM-A:5ns-1us
Distance uncertainty	+/- (0.8m +/-0.005% * testing distance / resolution)
Loss Resolution	0.001dB
Min.Distance Resolution	0.1m
Connector	FC interchangeable adapter (optional: SC,ST,LC interchangeable adapters)
Working Time	Standby>15 hour, measurement>8hour
VFL	1mW
Data Storage	Internal (TF card is optional)
Display	3.5 inch TFT color LCD
Battery	Built-in rechargeable battery

ACCESSORIES

Standard		
		
Carrying bag	USB cable	Manual
		
AC/DC adapter	FCU=FC/UPC FCA=FC/APC	SCU=SC/UPC SCA=SC/APC
Optional		
		
LC		
LCU=LC/UPC		

GENERAL SPECIFICATIONS

Size(H*W*D)	197mm * 107mm * 67mm
Weight	About 750g
Storage Temperature	-20 to +60 Celsius, < 90%RH
Operating Temperature	-10 to +50 Celsius, < 90%RH

ORDERING INFORMATION

OTDR-3501 - OTDR with 3.5" TFT LCD, 1310/1550nm, 28/26dB, SC/UPC and FC/UPC adapters included, VFL 1mW built-in