

CE^{2.0}

NEW



MSW-4204

4x GbE/RJ45 + 2x 1G/10G SFP+
L2+ Carrier Ethernet Switch

The next generation Carrier Ethernet Network Interface Device (NID) is designed for business connection in Ethernet virtual connection technology. The MSW-4204 is equipped with 2 SFP+ slots, dual rate 1G/10Gbps and 4 ports Gigabit RJ45 network interfaces. It can be configurable as either UNI or NNI device which are CE(Carrier Ethernet) 2.0 compliant for Metro Ethernet network deployments.

The MSW-4204 is positioned as an universal network interface device (NID) for most carrier Ethernet access applications. It has built-in hardware based Ethernet OAM engine and is compliant to the latest OAM standards to deliver the committed SLA performance KPIs measurement on a per service basis.

Features

- The next generation Ethernet demarcation device, at customer premise, fulfills the large-scale carrier Ethernet deployment for intelligent business connection and mobile backhaul services compliant to CE 2.0 standard.
- CE2.0 standards compliant product guarantees the full interoperability with other MEF certified equipment and reduces the risks and cost of Carrier Ethernet network deployment for operators and service providers.

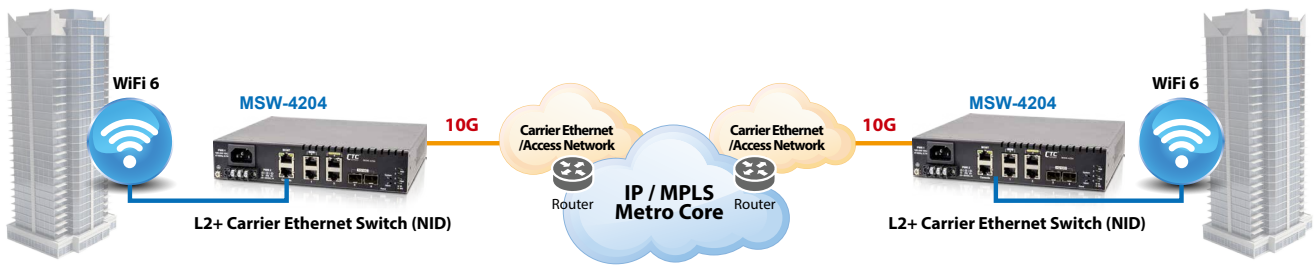
Specifications

Interface	Fiber port: 1G/10Gbps SFP+ x 2 Copper port: 10/100/1000Mbps RJ45 x 4	IP Multicasting	IGMP snooping v1/v2/v3, IGMP proxy reporting MLD snooping v1/v2 IGMP fast leave IGMP query IGMP filtering/throttling MVR (Multicast VLAN Registration) WebGUI/Telnet CLI interface
Console Port	RJ45 x 1 (RS-232)	Management	HTTPs, SSHv2 SNMP v1/v2c/v3 RMON I (1,2,3,9 groups) & RFC1213 MIB II Dying gasp in trap message DHCP client/relay TFTP/HTTP based firmware and configuration upgrade Port mirroring Event syslog server DNS client/proxy NTP client UPnP IPv4/IPv6 management SFF-8472 DDMMI IEEE 802.1ab LLDP
Management Port	10/100/1000Base-T RJ45 x 1	Ethernet OAM	IEEE 802.3ah, IEEE 802.1ag, ITU-T Y.1731, RFC2544, ITU-T Y.1564
Switching Fabric Capacity	54Gbps	Power Input	100V~240VAC, -24 ~ -60VDC
Packet Forwarding Rate	14880pps@10Mbps, 148800pps@100Mbps, 1488000pps@1000Mbps, 14880000pps@10Gbps,	Power Consumption	< 15W
Transmission Method	Store and Forward Switching	Operating Temperature	0~50°C
Packet Buffer	8M bits	Storage Temperature	-25~70°C
MAC Table Size	16K	Humidity	5%~90% (non-condensing)
Jumbo Frame Size	10K Bytes	Dimension	215 x 190 x 44 mm (DxWxH)
VLAN Feature	IEEE 802.1Q tagged VLAN (4K VLAN groups) IEEE 802.1ad QinQ VLAN Voice VLAN; MAC based VLAN; Protocol based VLAN; IP subnet based VLAN Private VLAN for port isolation; VLAN translation GVRP (GARP VLAN registration protocol)	Certification	CE, FCC class A
Link Aggregation	Static trunk (SA, DA, IP, TCP/UDP port) IEEE 802.3ad LACP, 3 LACP trunk groups Max, 6 port Max. per LACP trunk		
L2 Switching Protection	IEEE 802.1D STP/IEEE 802.1w RSTP/IEEE 802.1s MSTP ITU-T G.8031 ELPS/G.8032 ERPS		
QoS Feature	Hierarchical QoS IEEE 802.1Qbb priority based flow control Hard wired IEEE 802.1p 8 priority queues per port CoS based traffic classification on switch port, VLAN ID, DSCP, TCP/UDP port IEEE 802.1p priority tag remarking; DSCP remarking Per Port/Queue based ingress/egress rate limit in steps of 100kbps		
Storm Control	3 colors marker – CIR/EIR/Burst bandwidth control Multicast/Broadcast/Unicast storm suppression with flooding control		
Security	Static port security (MAC based) Per port limited MAC learning Port based/MAC base/single/multiple IEEE 802.1x access control 128 ACL rules based on L2~L4 information RADIUS/TACACS+ authentication IP/MAC binding DHCP snooping/relay option 82 IP source guard & ARP inspection		

2

Network Interface Device (NID) MSW-4204

Application



Ordering Information

Model Name	Description
MSW-4204-AC	1G RJ45 x 4 + 1G/10G SFP+ slots x 2 L2+ Carrier Ethernet Switch with single AC power supply built-in
MSW-4204-DC	1G RJ45 x 4 + 1G/10G SFP+ slots x 2 L2+ Carrier Ethernet Switch with single DC power supply built-in
MSW-4204-AD	1G RJ45 x 4 + 1G/10G SFP+ slots x 2 L2+ Carrier Ethernet Switch with AC & DC power supply built-in

Accessory Optional

- 10G SFP+ Transceiver Module

Model Name	Description
SFM-1000-SR85	10G SFP+ SR/SW MMF 300m, 850nm VCSEL, 10G Ethernet/FC/SDH/SONET
SFS-1010-LR31	10G SFP+ LR/LW SMF 10km, 1310nm DFB DML, 10G Ethernet/FC/SDH/SONET
SFS-1040-ER55	10G SFP+ ER/EW SMF 40km, 1550nm DFB EML, 10G Ethernet/FC/SDH/SONET
SFS-1080-ZR55	10G SFP+ ZR/EW SMF 80km, 1550nm DFB EML, 10G Ethernet/FC/SDH/SONET

- Rack Mount Kit

Model Name	Description
GSW/MSW-RMK	19" rack mount kit

Power Type
MSW - 4204 -
 Example: MSW - 4204