

2U Non-managed 8 Slot Chassis FMC



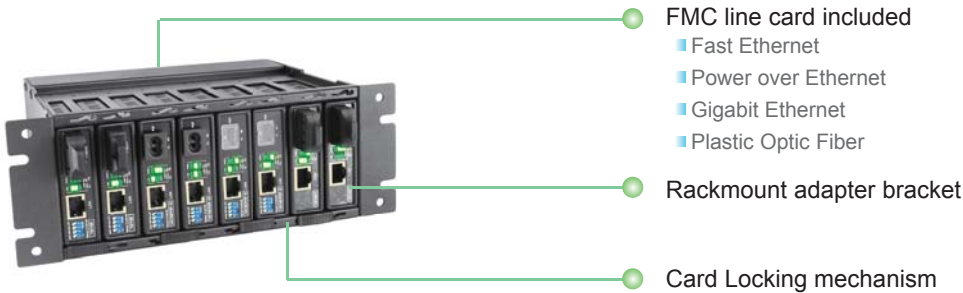
The FMC is a 2U high 10" (or half 19") chassis that supports up to 8 non-managed FMC or V2MC media converters. The FMC provides an economic solution in low density fiber converter installations where no management features are required. Each FMC or VDTU2A-301 converter is an independent Ethernet to fiber or Ethernet to copper media converter that may be used as a stand-alone converter or placed in the FMC chassis. When two chassis are connected in tandem, they fit exactly into a 2U 19" rack space. With one of three built-in power options of universal AC (100-240VAC), DC 18-36VDC or DC 36-72VDC, the FMC provides the working DC voltages for up to 8 FMC or VDTU2A-301 converters. The built in cooling fan ensures that temperatures in the rack remain within the tolerated working range.

Features

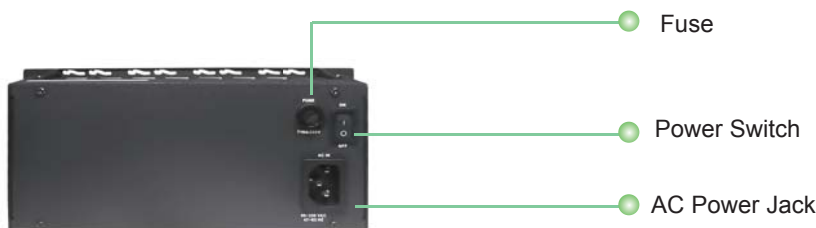
- 2U, 10" (or half 19") rack supports up to 8 FMC converter
- Chassis with single built-in power available in AC or DC models.
- Cross flow cooling fan built-in.
- Designed for rack mounting in tandem

Power Input	AC : 100 ~240V DC24 : 18 ~ 36V, DC48 : 36 ~ 72V
Power Consumption	< 45W
Dimensions	196 x 252 x 89mm (D x W x H)
Weight	1.47 kg
Temperature	0~50°C (Operating) ,0~70°C (Storage)
Humidity	10~90% non-condensing
Certification	CE, FCC, RoHS
MTBF	65,000 h (25°C)

FMC Front view



FMC Back view



Ordering Information

FMC-CH08- Chassis type

AC : 100 ~ 240V AC power

DC24 : 18 ~ 36V DC power

DC48 : 36 ~ 72V DC power

Example: FMC-CH08-AC

FMC- Optional card

10/100 : Fast Ethernet converter

10/100P : Fast Ethernet converter with POE

10/100POF : Plastic over Fiber converter

1100ES : Gigabit Ethernet converter

Example: FMC-10/100



Non-Managed Twin-rate Ethernet Fiber converter FMC-1100ES

The FMC-1100E is a copper to fiber Gigabit Ethernet solution designed to make conversion between 10/100/1000Base-T to 100Base-FX and 10/100/1000Base-T to 1000Base-SX/LX.. The FMC-1000E provides the fiber multi-rate 100Mbps/1000Mbps Ethernet with SC connector. This non-managed converter has a simple DIP switch for setting auto or forced mode for both UTP and fiber port and for enabling or disabling its LFP (Link Fault Pass-thru) feature by setting fiber port to 1000Base-FX forced mode.

Features

- 10/100/1000Base-T to 1000Base-X
- 10/100/1000Base-T to 100Base-FX
- Auto-negotiation or forced mode in both copper and fiber
- Auto MDI/MDIX
- Forward 1632 bytes (Max.) packets
- Supports Flow control (Pause)
- Supports Link Fault Pass through (LFP) function

Optical Interface

Connector	SC
Data rate	100Mbps, 1000Mbps
Duplex mode	Full duplex
Fiber	MM 50/125µm, 62.5/125µm. SM 9/125µm
Distance	MM 550m, SM 15/30/50/80/120km WDM 20/40/60/80km
Wavelength	MM 850nm, SM 1310,1550nm WDM 1310Tx/1550Rx (type A) 1550Tx/1310Rx (type B)

Electrical Interface

Connector	RJ45
Data rate	10Mbps, 100Mbps, 1000Mbps
Duplex mode	Half / Full duplex
Cable	10Base-T Cat.3, 4, 5, UTP 100Base-TX Cat.5, 5e or higher 1000Base-T Cat.5, 5e or higher

Standard

IEEE 802.3, IEEE 802.3u, IEEE802.3ab, IEEE802.3z

Indications

LED (Power, FX-Link, TX-Link, TX-SPD, TX-Duplex, LFP)

Power Input

12VDC

Power Consumption

< 5W

Dimension

108 x 74 x 23mm (D x W x H)

Weight

120g

Temperature

0 ~ 50°C (Operating), 0 ~ 70°C (Storage)

Humidity

10 ~ 90% non-condensing

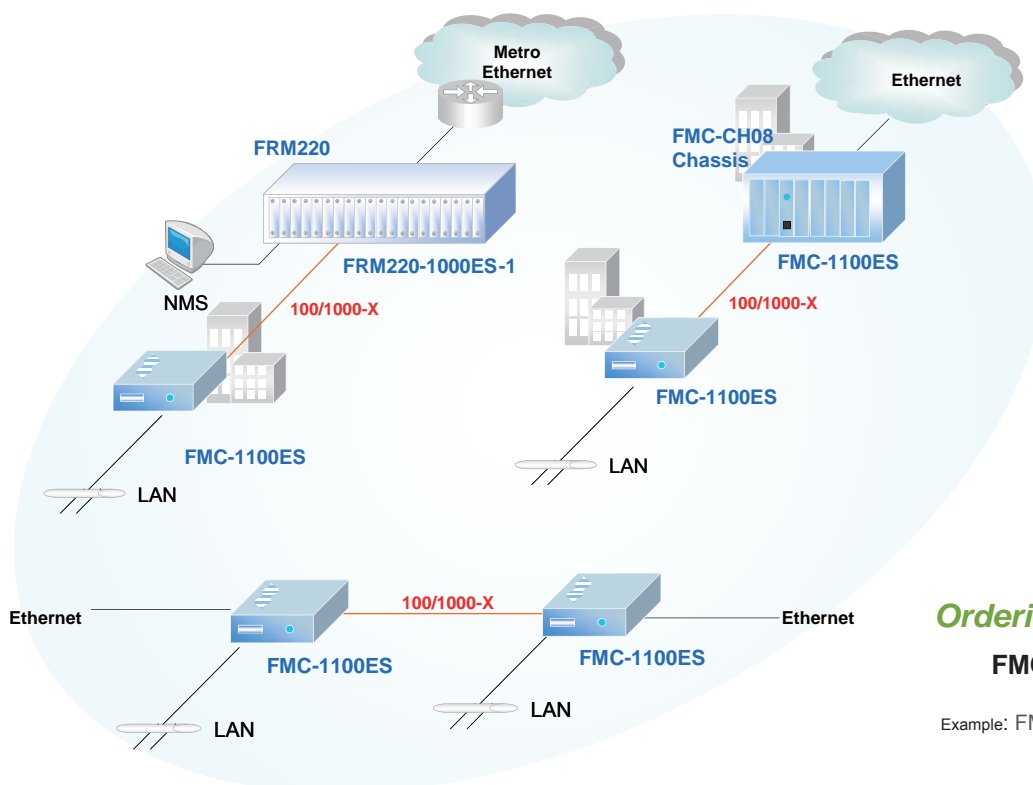
Certification

CE, FCC, LVD, RoHS

MTBF

65,000 hrs (25°C)

Managed GbE Media Converter



Ordering Information

FMC-□□□□□ Optional card
1100ES
Example: FMC-1100ES